

SOLAR AND OPTICAL PROPERTIES

SOLAR GAIN

The amount of heat increase resulting from solar energy entering a room. It is the total of 3 separate parts – the amount of energy transmitted directly into the room, the energy which is absorbed by the blind and a proportion of the energy which is absorbed by the window.

SHADING CO-EFFICIENT

The solar heat gain with the blind at the window divided by the solar heat gain with no blind at the window. The lower the shading co-efficient, therefore, the higher the efficiency of the fabric.

GTOT

The total solar energy transmittance entering a building through a window and shading device combined. It is the ratio of total energy hitting the building and the amount that gets through the glazing and shading. The lower the gtot value the lower the heat gain to the building.

| UNIVIEW® ZERO SOLAR & OPTICAL PERFORMANCE | | | | | | | | | | | | | | | | | |
|---|-------|------|------|---------|------|------|---------|-----|----|------|------|------|------|------|------|------|------|
| | Solar | | | Visible | | | UV | QRF | CF | GTOT | | | | SC | | | |
| | RS % | TS % | AS % | RV % | TV % | AV % | Block % | | | SG | DG | TG | DGLE | SG | DG | TG | DGLE |
| Uniview® Zero | | | | | | | | | | | | | | | | | |
| Cameo | 74 | 0 | 26 | 84 | 0 | 16 | 100 | 8 | 6+ | 0.26 | 0.30 | 0.32 | 0.32 | 0.30 | 0.35 | 0.37 | 0.37 |
| Chalk | 70 | 0 | 30 | 84 | 0 | 16 | 100 | 8 | 6+ | 0.28 | 0.32 | 0.34 | 0.34 | 0.33 | 0.37 | 0.39 | 0.39 |
| Ebony | 70 | 0 | 30 | 84 | 0 | 16 | 100 | 8 | 6+ | 0.28 | 0.32 | 0.33 | 0.34 | 0.32 | 0.37 | 0.38 | 0.39 |
| Glacier | 70 | 0 | 30 | 82 | 0 | 18 | 100 | 8 | 6+ | 0.28 | 0.32 | 0.33 | 0.34 | 0.32 | 0.37 | 0.38 | 0.39 |
| Sandstorm | 74 | 0 | 26 | 85 | 0 | 15 | 100 | 8 | 6+ | 0.26 | 0.31 | 0.32 | 0.32 | 0.30 | 0.35 | 0.37 | 0.37 |
| Shell | 71 | 0 | 29 | 82 | 0 | 18 | 100 | 8 | 6+ | 0.28 | 0.32 | 0.33 | 0.34 | 0.32 | 0.37 | 0.38 | 0.39 |

GLOSSARY

T: % Transmittance.

R: % Reflectiveness.

A: % Absorption.

UV Block: Percentage of UV light blocked by the fabric.

QRF: Quick Reference Factor.

CF: Colour Fastness.

gtot: The solar factor entering a building through a window and the shading device combined.

SC: Shading Co-efficient.

SG: Single Glazing.

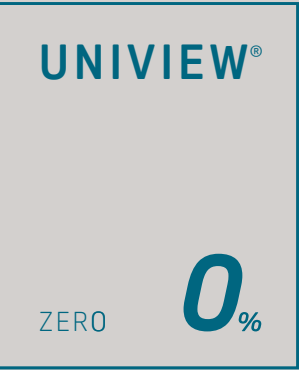
DG: Double Glazing.

TG: Triple Glazing.

DGLE: Double Glazing Low Emissivity.

UNIVIEW®
ZERO

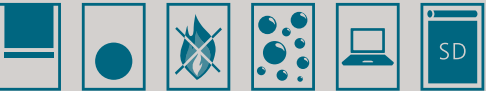
0%



Uniview® Zero provides the contract environment with the best in blackout solar shading solutions, offering a high-quality fabric with technical and aesthetic standards as determined by today’s residential, commercial, education and healthcare applications.

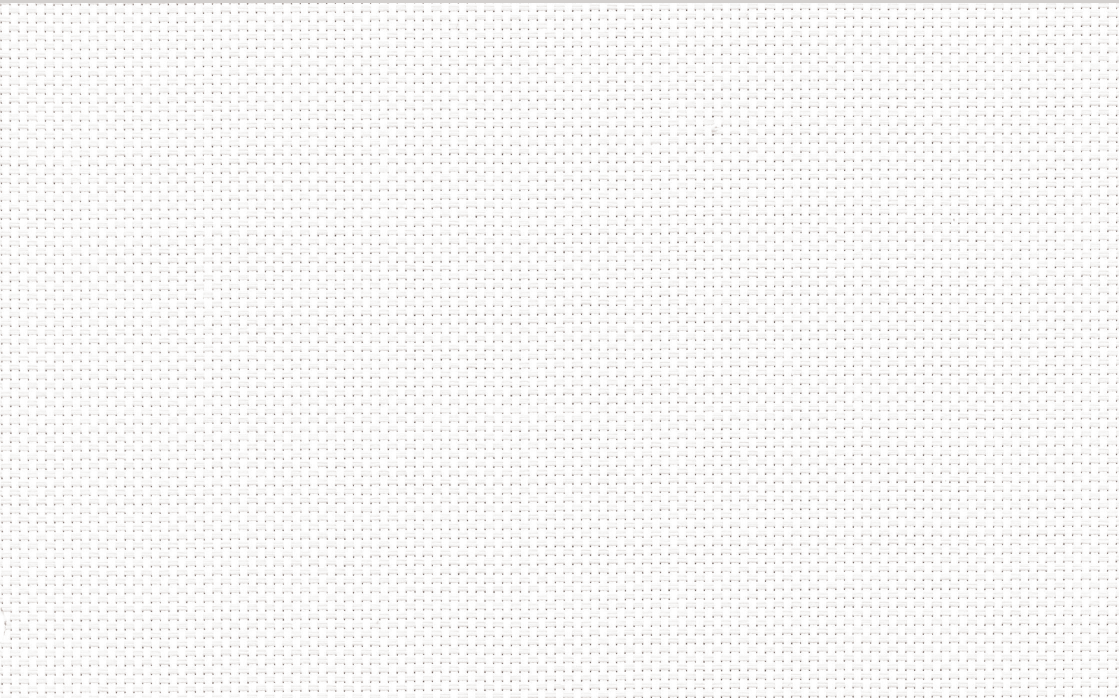
Uniview® Zero fabrics are durable, washable and will not fray. The fabric is fire retardant, non-toxic, UV resistant and is fungal resistant.

| UNIVIEW® ZERO SPECIFICATION | |
|-----------------------------|---|
| Colour Range | 6 |
| Roller Roll Length | 20m |
| Roller Roll Width | 2m |
| Fabric Composition | 30% Polyester ,70% PVC, foamed backing |
| Mesh/cm | 19 x 19 |
| Mesh Weight | 560g/m2 |
| Yarn Diameter | 0.32mm x 0.32mm |
| Thickness | 0.60mm |
| Breaking Strength | 253 x 263lbs ASTM D5035 |
| Abrasion Resistance | >1000 (ASTM D4966) |
| Openness Factor | 0% |
| Care & Washing | Do not soak. Clean by gently wiping with a sponge. |
| Availability | Ex-stock |
| Colour Fastness | BS EN ISO 105 - B02:1999 (colour fastness to artificial light Std 6) |
| Flammability Standards | BS 5867 (2008 Part 2, Type B) in accordance with BS EN ISO 15025:2002 Procedure A |
| Anti-Fungal | ASTM G21 |
| Property | Blockout |
| Samples | Fabric samples available on request |

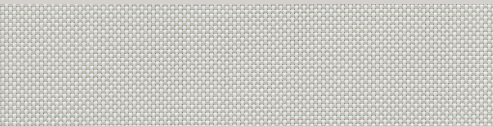


UNIVIEW®

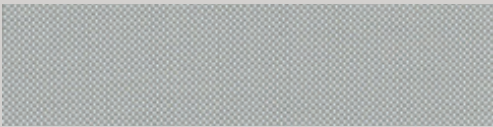
ZERO



CHALK RPU670



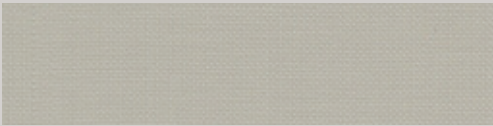
SHELL RPU671



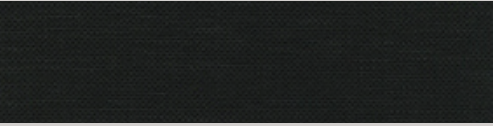
GLACIER RPU672



SANDSTORM RPU674



CAMEO RPU673



EBONY RPU675