

PREMIER
ROLLER



PREMIER ROLLER SPECIFICATION

V2 | SPEC 74

PREMIER ROLLER

PREMIER ROLLER SYSTEM

Premier Roller

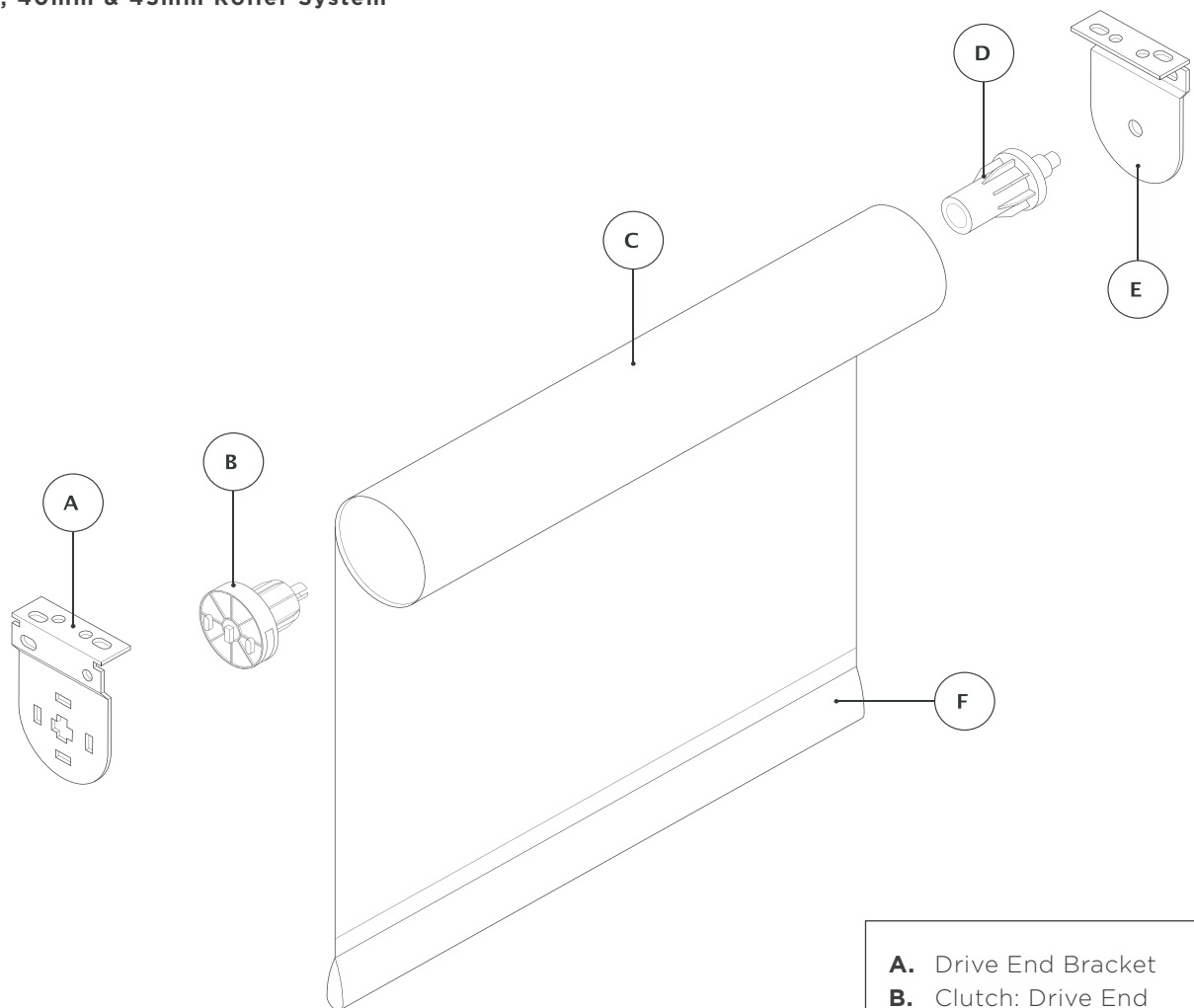
Premier roller blinds are offered on the Cruze 32mm, 40mm and 45mm systems.

| | STANDARD | OPTIONAL VARIATION | ADDITIONAL INFORMATION |
|---|--|---|--|
| Lath | Plastic Elliptic in sewn fabric pocket | Clear lath Unishade 15mm bottom bar Linear bottom bar Single wraparound bottom bar Double wraparound bottom bar | Width: 200mm - 2800mm (Recommended) Drop: 200mm - 3000mm (Recommended) |
| Operating Chain | White | Nickel | |
| Raise Control | Right hand side | Left hand side | Roller blinds are produced within an operating tolerance of +/-3mm (width) and +/-5mm (drop) |
| Control | Friction | Motorised | No screws are included |
| Clutches | 32mm | 40mm or 45mm | The chain length will be rounded down to the nearest continuous plastic chain length of 300mm / 500mm / 750mm / 1000mm |
| Fabric Position | Behind Roller | In front of roller (reverse rolled) | Operating control has a finished position of a min of 100mm from bottom drop of blind unless restricted by child safety. |
| Bracket | Std | 32mm and 40mm Extension bracket | All blinds up to 2200x3000mm will be produced on a 32mm system as standard. 40mm option available for a surcharge. Blinds 2201-2438mm x 3000mm will be made using 40mm system. Blinds 2438+ x 3000mm will be made using 45mm system. |
| Bracket Covers | n/a | Bracket covers | |
| Child Safety | Tie down clip | n/a | |
| Minimum Control Length | 150mm | n/a | |
| Deduction from floor for control length (when install height provided) | 1500mm | n/a | |
| Minimum Installation Height | 1650mm | n/a | |

ROLLER SYSTEM

A roller system engineered to precise perfection, offering the balance between design, engineering and quality. Technology, insight and knowledge is used to innovate, refine and push the boundaries to produce a collection of 32mm, 40mm & 45mm Roller System.

32mm, 40mm & 45mm Roller System



- A.** Drive End Bracket
- B.** Clutch: Drive End
- C.** Aluminium Tube
- D.** Clutch: Pin End
- E.** Pin End Bracket
- F.** Sewn Bottom Pocket

32MM ROLLER SYSTEM

Drive End Features:

- Tensile spring loading mechanism manufactured from stainless steel.
- Operated with plastic or nickel no.10 chain.
- Internal mechanisms are coated with tailored lubricant ensuring smooth and quiet operation.
- 3 pin secure fitting: clicks securely into universal bracket.
- Floating outer cover: enables chain to be fitted without dismantling the clutch.

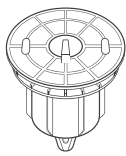
Idle End: Plunge pin offers flexibility when installing blinds..

Bracket features:

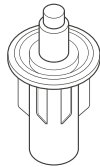
- Load capacity 2.75Kg.
- Powder coated for rust resistance.
- Cover cap: quality finish to blinds fitted outside the recess.
- Extension bracket available - projection dimensions 86mm

32mm Spec:

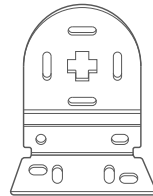
- Manufactured on aluminium tube. Acetal sidewinder control with option of plastic or nickel control chain. White powder coated brackets.
- 32mm single slot tubing. 3-pin secure fitting drive end and free end plunge pin.



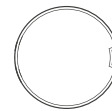
**Clutch:
Drive End**



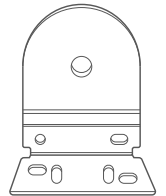
Clutch: Pin End



Drive End Bracket



**Single Slot
Aluminum Tube**



Pin End Bracket

40MM ROLLER SYSTEM

Drive End Features:

- Tensile spring loading mechanism manufactured from stainless steel.
- Operated with plastic or nickel no. 10 chain.
- Internal mechanisms are coated with tailored lubricant ensuring smooth and quiet operation.
- Engineered to fit double slot tubing.

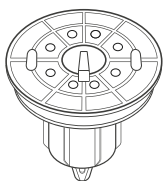
Idle End: Plunge pin offers flexibility when installing blinds.

Bracket features:

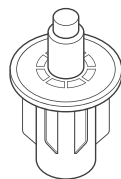
- Load capacity 3Kg.
- Powder coated for rust resistance.
- Separate brackets used for drive and free ends.
- Cover cap: quality finish to blinds fitted outside the recess while the extended base bracket aids installation.

40mm Spec:

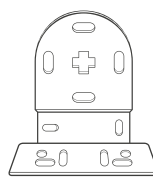
- Manufactured on aluminium tube. Acetal sidewinder control with option of plastic or nickel control chain. White powder coated brackets with extended base.
- 40mm double slotted tubing. Single round spring drive end and free end plunge pin.



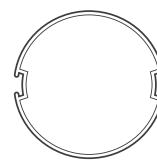
**Clutch:
Drive End**



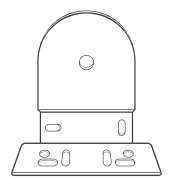
Clutch: Pin End



**Drive End
Bracket**



**Double Slot
Aluminum Tube**



Pin End Bracket

45MM ROLLER SYSTEM

Drive End Features:

- Tensile spring loading mechanism manufactured from stainless steel.
- Operated with plastic or nickel no. 10 chain.
- Internal mechanisms are coated with a tailored lubricant ensuring smooth and quiet operation.
- Engineered to fit triple slot tubing.
- Idle End: Plunge pin offers flexibility when installing blinds.

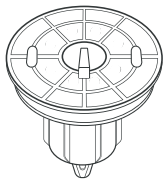
Free End: Unique plunge pin offers flexibility when installing blind.

Bracket features:

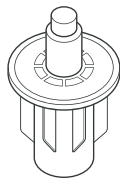
- Load capacity 4Kg.
- Powder coated for rust resistance.
- Separate brackets used for drive and free ends.
- Cover cap: Quality finish to blinds fitted outside the recess.

45mm Spec:

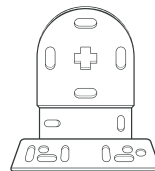
- Manufactured on aluminium tube
- Acetal sidewinder control with option of plastic or nickel control chain.
- White powder coated brackets with extended base.
- 45mm triple slot tubing.
- Single round spring drive end and free end plunge pin.



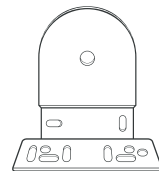
**Clutch:
Drive End**



Clutch: Pin End



Drive End Bracket



Pin End Bracket

PREMIER ROLLER

40MM NO SCREW ROLLER

No Screw roller blinds require no drilling or screwing with a friction based installation and a breakaway child safety connector.

| | |
|------------|-------------|
| Measure to | Recess only |
|------------|-------------|

| | MINIMUM | MAXIMUM |
|-------|---------|---------|
| WIDTH | 200 | 2200* |
| DROP | 200 | 2200* |

*Maximum width and drop are fabric dependent

| | STANDARD | OPTIONAL VARIATION |
|--|----------------------|---|
| ROLLER TUBE | 40mm Aluminim | N/A |
| LATH | Elliptical Plastic | N/A |
| OPERATING CHAIN | White plastic | Nickle |
| RAISE CONTROL | Right Hand Side | Left hand side |
| CONTROL | Friction | N/A |
| CLUTCHES | 40mm | N/A |
| FABRIC POSITION | Behind Roller | In front of the Roller (reverse rolled) |
| BRACKET | Non-Required | N/A |
| FINISH TYPE | Plain Finish | Please Specifiy |
| CHILD SAFETY | Easy Break Connector | N/A |
| MINIMUM CONTROL LENGTH | 150mm | N/A |
| DEDUCTION FROM FLOOR FOR CONTROL LENGTH (WHEN INSTALL HEIGHT PROVIDED) | 600mm - Easy Break | N/A |



CLUTCH



TIGHTENER



EASY BREAK CHAIN
CONNECTOR

PREMIER ROLLER

MOTORISATION

Premier Roller Blinds offer a range of motorised blind solutions. Create a safe, comfortable and more energy efficient home with motorised Roller Blinds.

Motorised blinds enhance child safety with the elimination of cords. Compatible with a wide range of motors including Cruze, Stelor & Somfy.

| Specification | CRUZE 32MM | CRUZE 40MM | STELOR 32MM | STELOR 40/45MM | SOMFY ROLL UP 24 | SOMFY ROLL UP 28 |
|---------------------|--|--|--|--|--|--|
| Blind Type | 32mm Roller | 40mm Roller | 32mm Roller | 40mm & 45mm Roller | 32mm Roller | 40mm Roller |
| Operation | Raise/Lower | Raise/Lower | Raise/Lower | Raise/Lower | Raise/Lower | Raise/Lower |
| Power Supply | 2600 mAh (integrated Li-ion Battery) | 2600 mAh (integrated Li-ion Battery) | 2600 mAh (integrated Li-ion Battery) | 3000 mAh (integrated Li-ion Battery) | 800 mAh (integrated Li-ion Battery) | 1400 mAh (integrated Li-ion Battery) |
| Voltage | 12v | 12v | DC5V | DC5V | 12v | 12v |
| Torque | 0.55Nm | 1.1Nm | 0.5Nm | 1.8Nm | 0.55Nm | 0.7Nm |
| Speed | 28Rpm | 28Rpm | 25Rpm | 25Rpm | 25Rpm | 28Rpm |
| Width* | 555mm- 2000mm | 650mm- 2800mm | 480mm- 2000mm | 525mm- 2500mm | 555mm- 2000mm | 650mm- 2800mm |
| Drop* | 200mm- 2000mm | 200mm- 3000mm | 200mm- 2000mm | 200mm- 3000mm | 200mm- 2000mm | 200mm- 3000mm |
| Battery Life | Nominal 6-8 Months | Nominal 6-8 Months | 6 Months | 6 Months | 6 Months | 6 Months |
| Warranty | 2 years | 2 years | 3 years | 3 years | 5 years | 5 years |
| Controls | 4 Channel Remote/ Cruze X Somfy app/Somfy Connectivity Kit | 4 Channel Remote/ Cruze X Somfy app/Somfy Connectivity Kit | Single/6 Channel Stelor Remotes | Single/6 Channel Stelor Remotes | Compatible with all Somfy Remotes/ Somfy Wall Switches/Somfy Connectivity Kit | Compatible with all Somfy Remotes/ Somfy Wall Switches/Somfy Connectivity Kit |

*Fabric Dependent

*Somfy Zigbee also available

PREMIER ROLLER

FINISH OPTIONS

Sewn Bottom Pocket

As standard all Premier Roller blinds will be finished with a sewn bottom pocket, with a plastic lathe.



ROLLER FABRIC QUALITY REFERENCE

MADE TO MEASURE

Joint Seams

Where fabric joins are required, all joins will be positioned as close to the top of the roller tube as possible. For orders that have multiple blinds with the same drop and require a join, the position of the join should be in the same place on all blinds

Lathe

Lathe used in Premier Roller is a white PVC Elliptical shaped lathe

DEFECTS

Decora deem a defect to be an irregularity visible from a metre distance using standard light. Two variations of defects include a single defect or a continuous defect:

- A single defect is an irregularity which is between 0.1cm and 10cm in size
- A continuous defect is an irregularity which is more than 10cm in size or where two single irregularities are within 1m of one another

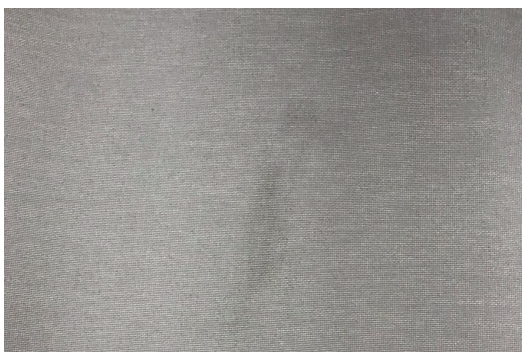
Made to measure blind orders are reviewed in our factory and should therefore meet quality standards prior to despatch.

WHAT IS DEEMED AS AN IRREGULARITY?

Irregularities include dirty marks, discolouration, weaving flaws, pin holes and creasing. Please refer to overleaf as a quality guide:

Dirty Marks

Acceptable



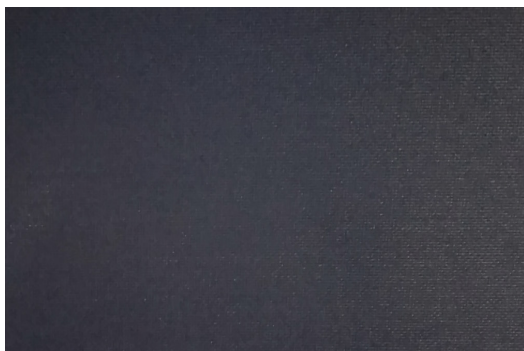
Not Acceptable



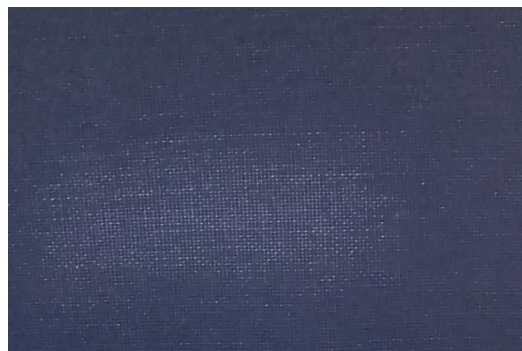
**PREMIER
ROLLER**

Discolouration

Acceptable

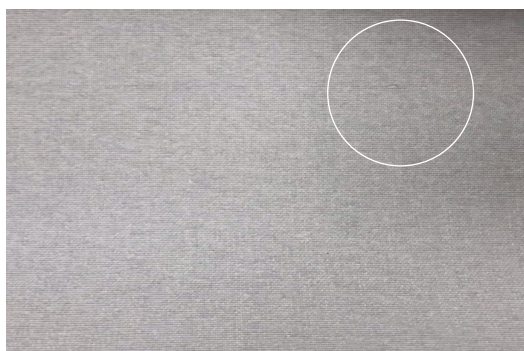


Not Acceptable

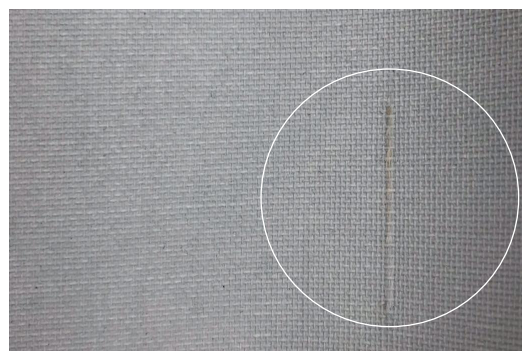


Weaving Flaws

Acceptable



Not Acceptable

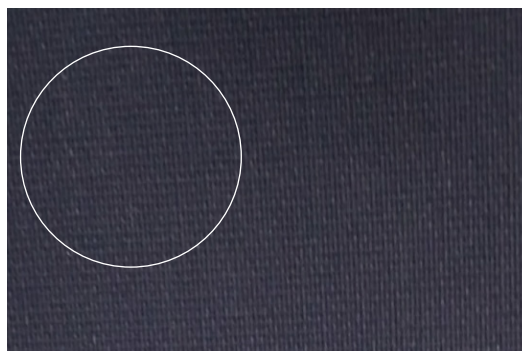


Pin Holes

Acceptable

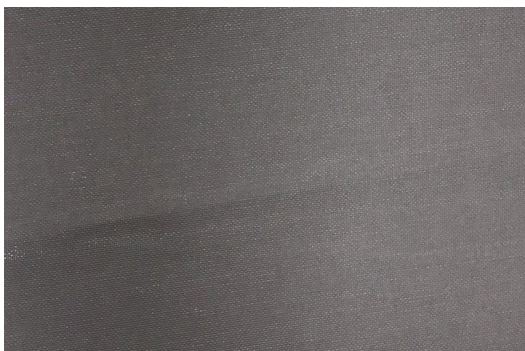


Not Acceptable

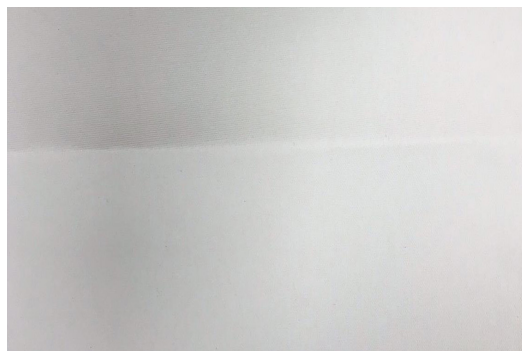


Creasing

Acceptable



Not Acceptable

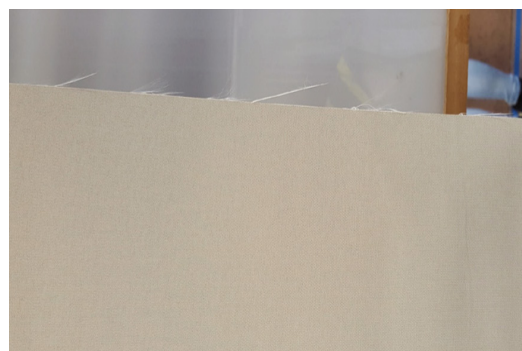


Fraying

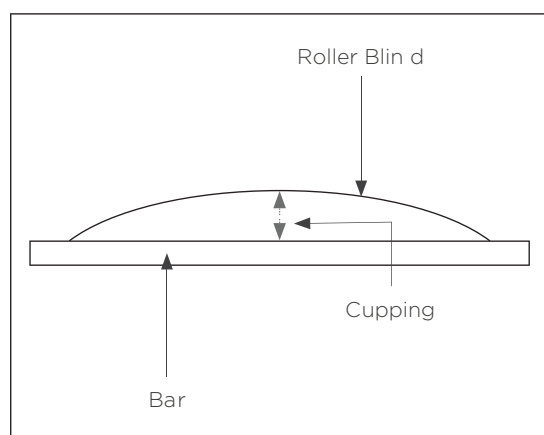
Acceptable



Not Acceptable



Cupping (Above View)

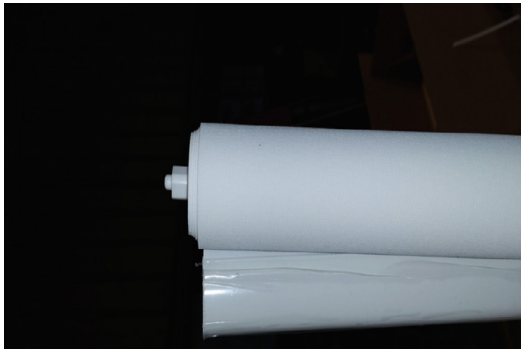


*Please note an acceptance of 1% of width of blind

**PREMIER
ROLLER**

Run Off

Acceptable



Not Acceptable



*Refer to installation instructions on how to correct run-off following installation of blind
